



**EAGLE
POINT**



In-Depth Look

Quantity Takeoff

Count items and estimate project costs quickly.

Reduce the time spent counting and measuring items within a project, and spend that time wisely by analyzing projects and their costs.

COST ANALYSIS

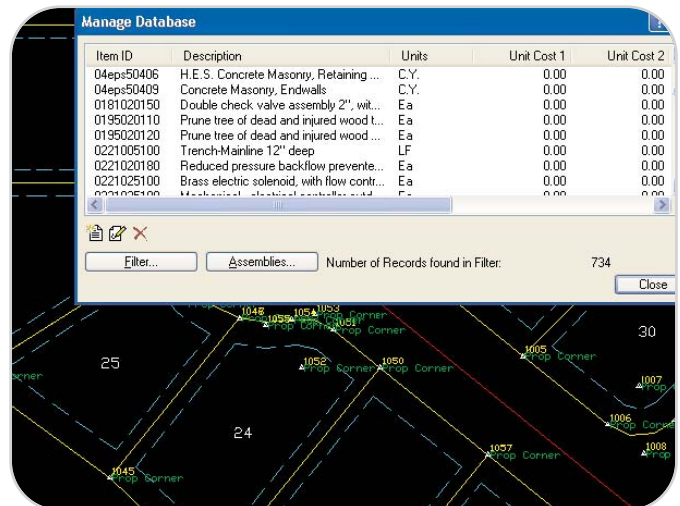
Use *Quantity Takeoff* to report tabulation of materials, unit cost for specific items, labor costs and totals for the entire project.

CUSTOMIZABLE

Quickly build your own database of ID tags by importing delimited ASCII files (*.CSV) and tag items to count each one or to measure the length, area or volume of an object.

FULLY INTEGRATED

Use *Quantity Takeoff* in conjunction with Eagle Point's civil engineering, surveying and landscape design products to provide accurate counts of items as they are placed in the project.



"Eagle Point software has been an invaluable tool in efficiently doing my job. It was much easier to learn than most other software that I have used. The menus are well thought out and intuitively organized. The reports available are simply the best that I have ever seen, with any software at any price. Several have become a standard part of each of our job files."

- Richard Peckman
Crew Chief
Nesdahl Surveying &
Engineering, P.C.



COMPREHENSIVE ITEM DATABASE

- *Quantity Takeoff* includes a database of customizable construction items that can be tailored to meet your needs.
- Amend your current database entries using an ASCII file.
- Enter an unlimited number of items to your database.
- Search for items in seconds using filters such as C.S.I. (Construction Specification Institute) division, item ID, description, unit of measure or unit cost.
- Each database item carries two costs, allowing you to run reports that vary for seasonality, labor or vendor.
- Create assemblies to group multiple items together into one cost. These items can include quantity measures, labor expenses, treatment expenses, etc.
- Store and organize all your sub-assemblies in one area.

ASSIGN ITEM IDS

- Tag CAD objects with an item ID using these methods:
 - Select any CAD object using a CAD selection tool and assign it an item ID from your database. Specify the quantity for the object you are assigning to reduce your selection process.
 - Select the linear distance to be measured in length or stations. Use CAD to select a line, arc, or polyline/chain.
 - Select a block/cell graphically, or select all blocks/cells with a certain name.
 - Select a line, polyline/chain and assign a width, or select a closed object or region. Specify any of these units for your quantity: acres/hectares, square feet/square meters, and square yards.
 - Provide a depth to an area and assign a volume tag. Specify the volume unit using acre-feet, cubic feet, cubic yards or cubic meters.
 - Select a layer/level and then the item ID to assign. Fast and easy!
- Set up pipes and structures in *Storm Sewers* and *Sanitary Sewers* to automatically include a QTO tag. This saves valuable time when calculating your quantities. Define sub-assemblies for structure components like inlets and manholes.
- Set up plant materials in *Plant Database* to automatically include a QTO tag. This saves valuable time when calculating your quantities.

- Set up pipes and sprinkler heads in *Advanced Irrigation Design* and *Irrigation Design* to automatically include a QTO tag. This saves valuable time when calculating your quantities.
- Quickly view which items have and have not been tagged to eliminate tag duplication. You can also choose to view objects with specific item IDs.

CALCULATE QUANTITIES AND ESTIMATE COSTS

- Build a selection set of any or all tagged item IDs for your Bill of Materials report.
- Easily filter only the items that you want reported in your Bill of Materials. Use *Quantity Takeoff's* search filters to group your selection using layers, blocks or individual item IDs.
- You can manually select the items for your report. *Quantity Takeoff* validates the items within your selection set and highlights any CAD object that has not been tagged with an item ID.

BILL OF MATERIALS

- If necessary, you can add or edit any takeoff result.
- Totals are automatically recalculated as edits occur.
- Import saved Bill of Materials files from other drawings and projects to produce a grand total.
- Print your quantity report using a variety of formats. The output can be placed in any order and field widths can be set to fit your printing requirements.

ABOUT EAGLE POINT

For over 20 years, Eagle Point has provided the Land Development industry with business and technology solutions. We use a defined process to explore your business and provide you with the right balance of solutions to help your organization thrive. We've helped over 30,000 clients worldwide.