



### DATA

- Display an itemized list of available plants. Each plant is listed by scientific name, common name and code name.
- Print a hard copy of the entire database or selections from the database.
- Import a file from other plant database programs into *Plant Database*.
- Create plant palettes that can be used when working in *Landscape Design*.

### VIEW

- View general information about a selected plant, including scientific name, common name and code name, as well as an image of the plant and an admiration point.
- View the areas which have the most ideal climates suitable for the growth of the selected plant.
- View the most favorable conditions in which to gain optimal growing results for the selected plant, including soil conditions, sun exposure, miscellaneous conditions and tolerances.
- View information regarding growth habits and maintenance needs of the selected plant.
- You have the ability to list the available installed sizes. This information will assist you in placing plant material in *Landscape Design* since it will dynamically fill in a number of options for you.
- View information regarding specific attributes which lend themselves to determine the aesthetics of a particular plant.
- View which zones have favorable growing conditions for a particular plant.

### RECORDS

- Permanently remove previously deleted plants from the database or retrieve the records that you previously deleted from the list in the database.

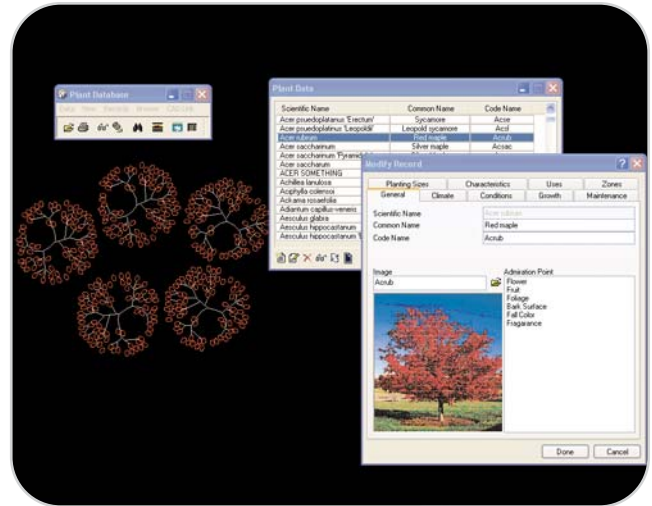
### BROWSE

- Search the database for specific plants that fit certain criteria required for a design project.
- Abbreviate the displayed list of plants to include only those plants that include the specific characteristics in which you

are interested to create smaller name files or palettes of frequently used plants.

### CAD LINK

- Graphically display the location of selected plants within your design in the CAD engine.
- Access plant records directly while in the CAD engine.



### ABOUT EAGLE POINT

*For over 20 years, Eagle Point has provided the Land Development industry with business and technology solutions. We use a defined process to explore your business and provide you with the right balance of solutions to help your organization thrive. We've helped over 30,000 clients worldwide.*