



**EAGLE
POINT**



In-Depth Look

Landscape Design

Create comprehensive planting plans quickly.

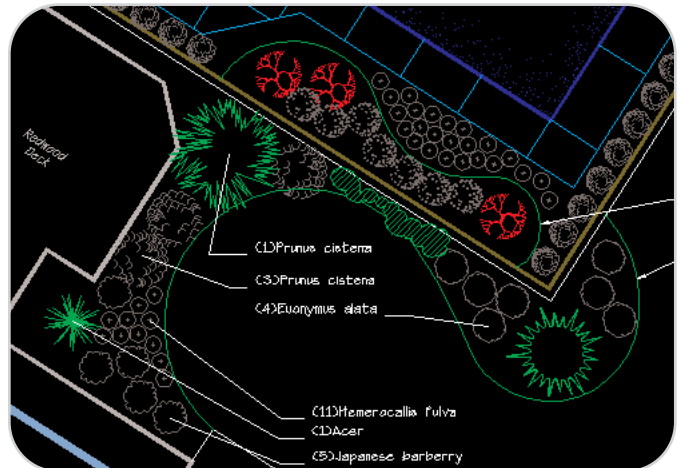
*Functionality related to the creation of planting plans, including the plant symbols, links to **Quantity Takeoff**, plant mixes, plant tables, growth simulation and vegetation lines. A completely customizable database of plants covering every climatic zone in the world is also available in **Plant Database**.*

DESIGN IN 2-D AND 3-D

Landscape Design allows you to design in 2-D and 3-D simultaneously. Produce accurate plant material reports at all times.

FLEXIBILITY WITH PLANT TABLES

Customize what information is entered in your plant schedules. Then place the schedules in your CAD file or export them to Microsoft® Excel.



"I just wanted to remark on the excellent service and support we have received from Eagle Point. Our ability to contact you quickly and easily has been appreciated and the VIP technical support has been excellent. We look forward to a long relationship with Eagle Point."

- John Rafoth
CAD Systems Analyst
Bergmann Associates



ILLUSTRATE

- Illustrate the edges of large masses of plants, rather than showing individual plants.
- Apply any pattern to an object in the CAD graphic.
- Create an outline around a selected group of plants. The outline is located on a separate layer/level, allowing you to turn off symbols and show all plant locations with a simple border rather than a large number of individual plant symbols.
- Create graphic tree shadows for rendering plan view site plans.
- Graphically indicate turf areas or other irregular-shaped planting beds by inserting a large number of dots along the edge and gradually fading to fewer dots in the center.

LOCATE

- Insert broadleaf, conifer, palm, cactus, shrub and flower symbols into your design as 2-D or 3-D objects.
- Specify the size, rotation angle and elevation for your symbols.
- Specify whether you want your plant symbols inserted on a hedge row or in a grove.
- You have the ability to customize your symbols' palette.

ALTERATIONS

- Convert all circles on a specified layer/level and replace the circles with a selected plant symbol at a scale equal to the diameter of the circle. This is useful for converting from a conceptual plan of basic geometry to a more detailed planting plan.
- Edit plant names or change other information about a particular plant once it has been placed in the drawing.
- Randomly remove a large number of tree symbols from your drawing, such as when they have been inserted using the Grove option.
- Show what a design may look like at any specified period of time. This is useful for seeing how something will look x years into the future or how the landscaping might look immediately after trees, shrubs, etc. are planted.

MATERIALS

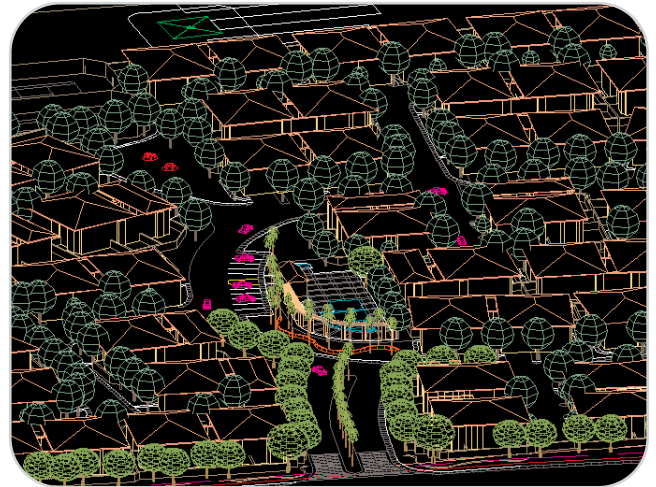
- Edit plant lists and synchronize the plant list with the database.
- Apply labels to tree and shrub symbols that have already been inserted into the drawing.
- Establish the line style, label style and text to be included in your plant labels.
- Change the labels on a CAD graphic from scientific name to common name or vice versa for all of the plants with a single menu selection.
- Assign multiple plants to an area, typically represented by a closed polyline. Plants are identified by a percentage of the total area shown, rather than locating individual plants. This is very useful for bedding areas, ground covers or rock gardens.
- Generate a customized plant table or legend and place it in the CAD graphic.
- Launch or access *Plant Database* from within *Landscape Design*.

TOOLS

- Insert various symbols representing north arrows into the drawing.
- Insert various symbols representing bar scales into the drawing and specify the drawing scale.
- Insert various symbols representing tags into the drawing and specify text associated with the tags.



- Change the X, Y, Z scale of selected blocks to change the height or width of objects in the drawing.
- Select an object and copy/move it to a different location and then rotate it, all in one command.
- Make multiple copies of an object(s).
- Change the crown diameter of multiple plant symbols without losing the insertion location.
- Reverse the direction of a polyline, line or arc segment.
- Hatch areas with patterns to represent different elements.
- Select multiple points/line segments in the drawing and **Landscape Design** totals the distance for all points/line segments selected and each individual selection.
- Select an object on a layer/level and **Landscape Design** automatically totals the area of all closed polylines on the object's layer/level.
- Select two line segments to get the angle between.
- Create a catalog of selected items in the drawing and use a graphic, as well as text notes, to describe the items.
- Set the default CAD settings for constructed objects.
- Represent a breakline by a zigzag or swoop to show an area on a drawing that may continue onto another sheet, or a distance that is longer than the distance displayed.
- Break an existing line or polyline and place an arc entity over the line that it crosses.
- Change the width of single or multiple polyline segments.
- Place a border in your CAD graphic and select the symbol, orientation and rotation angle for the border.
- Insert a block of ASCII text into the drawing to represent planting specifications.
- Enter a text string and have it follow the path of a polyline.
- Break a single text string into two separate text strings or join two separate text strings into a single text string. This is useful when editing large blocks of imported text.
- Modify several aspects of a text string without having to erase and retype the text string.
- Change all the characters in a text string to upper or lower case in one step.
- Make changes to multiple pieces of the same text.
- Import an ASCII file in several different formats and convert it to CAD points.
- Lay out an easy-to-use reference grid on a site to locate items in the drawing.
- Display a drawing with 3-D entities in a perspective view to show a client how the site will look once it is built.
- Quickly view a drawing with 3-D entities in elevation view.



ABOUT EAGLE POINT

For over 20 years, Eagle Point has provided the Land Development industry with business and technology solutions. We use a defined process to explore your business and provide you with the right balance of solutions to help your organization thrive. We've helped over 30,000 clients worldwide.